



# TEXAS A&M AGRI LIFE EXTENSION

## The 4-H Times

**Willacy County**

**October 2021**

**Volume 11 Issue 2**

### ***Halloween Safety Tips***

#### **CDC GUIDELINES FOR HOLIDAYS!**

Travel may increase your chance of spreading and getting COVID-19. CDC continues to recommend postponing travel and staying home, as this is the best way to protect yourself and others this year.

If you are considering traveling for a holiday, visit CDC's [Travel](#) page to help you decide what is best for you and your family

Wear a mask

- Wear a mask with two or more layers to stop the spread of COVID-19 to protect others and yourself.

Wear your mask over your nose and mouth, secure it under your chin, and make sure it fits snugly against the sides of your face.

- Wear a mask indoors and outdoors.

In cold weather, wear your mask under your scarf, ski mask, or balaclava.

Keep a spare mask in case your mask becomes wet from moisture in your breath or from snow or rain.

Stay at least 6 feet away from others who do not live with you

Indoors or outdoors, you are more likely to get or spread COVID-19 when you are in close contact with others for a total of 15 minutes or more over a 24-hour period.

Remember that people without symptoms or with a recent negative test result can still spread COVID-19 to others.

Wash your hands

- Wash hands often with soap and water for at least 20 seconds, especially after you have been in a public place, after blowing your nose, coughing, or sneezing and before eating.
- Make sure to dry your hands completely using a clean towel or by air drying.
- 

If soap and water are not readily available, use a hand sanitizer that contains at least 60% alcohol.

Avoid touching your mask, eyes, nose, and mouth.



**Extension Office will be closed October 12th in observance of Columbus Day the office will reopen October 13th at regular working hours!**



**RGV Commercial Heifer Validation will be held November 7th at the Rio Grande Valley Livestock Show Grounds between 9AM-1PM. Exhibitors must be present at the time of validations. Please remember to keep your validation form that has your information for you will be needing it at a later time for entries.**

## **Goat & Lamb Validations**

Lamb, Goat & Registered Heifers validation dates will be October 20 & 21 at the Willacy County Livestock Show grounds. from 4-6 PM. Please do not get your animals down until all Ag teachers and County Agents are present. **All exhibitors and parents must be present at the time of validations to sign all paper work.**

**WE MUST FOLLOW COVID GUIDELINES. MASKS WILL BE REQUIRED AND SOCIAL DISTANCING WILL BE ENFORCED. THERE WILL BE HAND SANITIZER AVAILABLE FOR YOUR USE. Each school will have a scheduled time they are as follows:**

**October 20th-Lyford FFA & San Perlita FFA**

**October 21st-Raymondville FFA, Lasara FFA & Willacy 4-H**

**Hog Validations will take place in November anyone who bought tags will be contacted to schedule a date to do validations.**

## **4-H Enrollment Fees**

**4-H Registration Deadline is November 1st and a fee of \$25 will need to be paid. If you register after November 1st the fee will be \$30. YOU MUST BE REGISTERED BY NOVEMBER 1ST IF YOU WILL BE PARTICIPATING IN ANY LIVESTOCK SHOWS!!The website to register is V2.4HONLINE.COM**

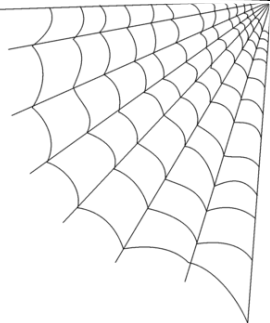
**If you are interested in showing at any major shows in Texas please contact the Extension office to pick up applications! Deadline is Nov. 23rd**

**The new course for Quality Counts is now up and running on their website. Every 4-H & FFA member must complete the course in order to show at any 2021 Livestock shows.**

**<https://www.texaslivestockvalidation.com/qc/qcregister.aspx>**



# October



Sunday	Monday	Tuesday	Wednesday	Thursday	Friday	Saturday
				1	2	3
4	5	6	7	8	9	10
<b>National 4-H Week</b>						
11	 <div style="background-color: red; color: white; text-align: center; padding: 2px;"><b>OFFICE CLOSED</b></div>	13	14	15	16	17
18	19	Goat & Lamb Validations 4-6 p.m. @ Lyford Ag Farm.	Goat & Lamb Validations 4-6 p.m. @ Lyford Ag Farm	22	23	24
25	26	27	28	29	30	31
						

# Covid-19

People with COVID-19 have had a wide range of symptoms reported – ranging from mild symptoms to severe illness. Symptoms may appear **2-14 days after exposure to the virus**. People with these symptoms may have COVID-19:

- Fever or chills
- Cough
- Shortness of breath or difficulty breathing
- Fatigue
- Muscle or body aches
- Headache
- New loss of taste or smell
- Sore throat
- Congestion or runny nose
- Nausea or vomiting
- Diarrhea

This list does not include all possible symptoms. CDC will continue to update this list as we learn more about COVID-19.

What is the difference between Influenza (Flu) and COVID-19?

Influenza (Flu) and COVID-19 are both contagious respiratory illnesses, but they are caused by different viruses. COVID-19 is caused by infection with a new coronavirus (called SARS-CoV-2), and flu is caused by infection with influenza viruses.

COVID-19 seems to spread more easily than flu and causes more serious illnesses in some people. It can also take longer before people show symptoms and people can be contagious for longer. More information about differences between flu and COVID-19 is available in the different sections below.

Because some of the symptoms of flu and COVID-19 are similar, it may be hard to tell the difference between them based on symptoms alone, and testing may be needed to help confirm a diagnosis.

While more is learned every day about COVID-19 and the virus that causes it, there is still a lot that is unknown. This page compares COVID-19 and flu, given the best available information to date.



## Halloween Word Search

s m o a t o n e e w o l l a h r s  
c t r i c k o r t r e a t s t r p  
h a u n t e d h o u s e p k c e o  
r a n k s r s k t e o i d e o t o  
t r e d l i t t e p d w b l i s k  
c t d r y p s s a e a m i e a n y  
k c i t s m o o r b t b l t k o c  
a r k k e a h s e m u t s o c m n  
h o o k k v g p u m p k i n o h m

- BATS
- BROOMSTICK
- CANDY
- COSTUMES
- GHOSTS
- HALLOWEEN
- HAUNTED HOUSE
- MONSTER
- PUMPKIN
- SKELETON
- SPIDERS
- SPOOKY
- TRICK OR TREAT
- VAMPIRE





Texas A&M AgriLife Extension  
Willacy County  
471 W. HIDALGO AVE  
Raymondville, TX 78580

