



4-H TIMES

Volume 9, Issue 5

TEXAS A&M
AGRI LIFE
EXTENSION

January 2020

2020 WILLACY COUNTY FAIR & AUCTION

This show is limited to youth who are active, bona-fide members of an FFA, Jr. FFA, or 4-H club in Willacy County. Youth must be enrolled in school or be part of a home school program in Willacy County or reside in Willacy County. Students who live in southern Kenedy County (Norias and south) are eligible to show in the Willacy County Fair. * This rule does not apply to entries in the arts & crafts, photography, or bake show. * This rule does apply to substitute showmen.



Special points of interest:

- *Willacy County Fair and Auction Information*
- *Calendar*
- *Raffle Tickets*
- *Beef Syndicate Information*
- *Online Info for 4-H Managers*
- *Word Search*
- *Patriotism Through Preparedness*

Wednesday-January 22, 2020

12-7 PM DELIVERY OF:

STEERS, HEIFERS, MARKET SWINE, MARKET LAMBS, AND MARKET GOATS

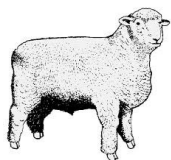
7:00PM--- CLASSIFICATION AND TURN IN OF WEIGHT CARDS FOR ALL STEERS, HEIFERS, SWINE, LAMBS & GOATS.

Thursday-January 23, 2020

4:00 PM Judging of Heifers (all cattle showmanship will follow steer show on Friday)

6:00 PM Judging of Market lambs (showmanship immediately following)

Judging of Market Goats (showmanship immediately following)



Texas A&M AgriLIFE Extension Service Programs serve people of all ages regardless of socioeconomic level, race, color, sex, disability, or national origin. The Texas A&M University System, U.S. Department of Agriculture, and the County Commissioners Courts of Texas cooperating.

Friday-January 24, 2020

10:00AM-Willacy County Special Show

1:00 PM-Judging of Market Steers (all cattle showmanship will follow steer show)

5:00 PM-Judging of Market Swine (showmanship immediately following)



7:00 PM-Team Roping-Rodeo Area (Books open at 6)

8:00 PM- LIL' Miss Cowgirl Contest (OR immediately following swine showmanship)

Saturday-January 25, 2020

9:00 AM-4-H and FFA Livestock Judging Contest

10:00 AM- Bake Show

10:00 AM-Youth Pet Show

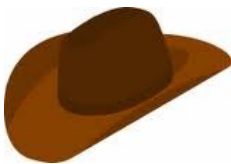
11:00 AM-Pee Wee Swine Showmanship



5:00 PM-Buyer's Reception

6:00 PM-Premium Sale

9:00 PM-Live Music on Main Stage




Entry Deadline...

All entries for the Willacy County Fair & Auction MUST be turned in by January 7th @ 6:30 PM at the Willacy 4-H meeting!

JANUARY



Sun	Mon	Tue	Wed	Thu	Fri	Sat
			1	2	3	4
5 CLEAN UP DAY Beef Syn- dicate & Raffle Ticket Money Due @ 5:00pm OR Monday	6 RGVLS en- tries Due / Willacy County Fair Entries @4 pm at the Extension office	7	8	9	10	11 Beef Syndi- cate BBQ
12	13	14	15	16	17 WCLS COOK- OFF	18 WCLS COOK- OFF
19	20 OFFICE CLOSED	21	22 Willacy County Fair & Auction	23 Willacy County Fair & Auction	24 Willacy County Fair & Auction	25 Willacy County Fair & Auction
26	27	28	29	30	31	

Some Rules you should know about, for the Willacy County Fair & Auction

Important

1. All animals will go through premium sale for premium prize. Exhibitors choosing to sell market animals may choose to sell at floor price. This decision must be designated on weight card.
2. Steers, heifers, lambs, swine, and goats must have a proper validation tag or identification. All exhibitors must show only animals validated in their name.
3. Each exhibitor can show two of each species of animals. I.e.: a person could show two lambs, two goats, two hogs, two heifers, and two steers. However, only one project will be allowed to sell through the premium sale. Exception: any and all grand champions or reserve grand champions must sell through the premium sale no matter if an exhibitor has more than one.

Go into Willacy.agrilife.org to view more of the Willacy County Livestock Show Rule book

Raffle Tickets

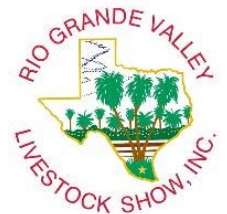
All Beef Syndicate and Raffle tickets and money are due January 6th 5:30 at the Willacy County Show Barn.

Beef Syndicate Plates

Anyone who will be showing an animal in the Willacy County Fair needs to show up and help on January 11th no ands if's or buts. Please show up at 4:00 PM to help with serving plates.

Rio Grande Valley Livestock Show Entry Deadlines

Those of you who will be participating in the Rio Grande Valley Livestock Show the deadline to turn in the entries to the Extension Office will be January 7th for Jr. Market Animals. The deadline to turn in entries to the Extension Office for Jr. Breeding Animals is January 7th. You can go into their website at www.rgvlivestockshow.org to find the entry form that you will be needing or by the Extension Office.



Online Resource for 4-H Club Managers

CLUB ED was developed as a resource for club officers and club managers to gather ideas, management information, ceremonies, inspirations, program ideas, and other great club resources.

CLUB ED is organized month by month in order to make it easier for information gathering. In each month you will find the following pieces of information: Club Activities, Club Managers Checklist,

Community Service Activities, Flag Ceremonies, Ice Breakers, Inspirations, Parent Opportunities and Program Ideas. CLUB ED is located at <http://texas4-h.tamu.edu/clubed/>



2019



c	u	y	e	k	r	u	t	o	m	a
p	e	i	o	s	n	h	o	s	u	s
w	s	l	i	p	g	b	p	k	s	r
r	t	y	e	i	b	a	h	r	i	a
f	h	u	n	b	r	p	a	o	c	e
o	g	d	a	k	r	r	t	w	s	y
e	i	w	l	s	o	a	s	e	n	w
m	l	e	t	a	a	s	t	r	n	e
s	r	e	k	a	m	e	s	i	o	n
s	n	o	w	n	a	i	g	f	o	g
k	i	t	v	a	c	a	t	i	o	n

NEW YEAR
FIREWORKS
SPARKLERS
TURKEY
LIGHTS
MIDNIGHT
TOP HATS
NOISE MAKERS
MUSIC
SNOW
VACATION
CELEBRATION



Patriotism Through Preparedness

Each year, more than 4,000 Americans die and more than 25,000 are injured in fires, many of which could be prevented. Direct property loss due to fires is estimated at \$8.6 billion annually.

To protect yourself, it is important to understand the basic characteristics of fire. Fire spreads quickly; there is no time to gather valuables or make a phone call. In just two minutes, a fire can become life-threatening. In five minutes, a residence can be engulfed in flames.

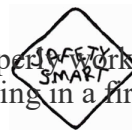


Heat and smoke from fire can be more dangerous than the flames. Inhaling the super-hot air can sear your lungs. Fire produces poisonous gases that make you disoriented and drowsy. Instead of being awakened by a fire, you may fall into a deeper sleep. Asphyxiation is the leading cause of fire deaths, exceeding burns by

a three-to-one ratio.

Smoke Alarms

- Install smoke alarms. Properly working alarms decrease your chances of dying in a fire by half
- Place smoke alarms on every level of your residence. Place them outside bedrooms on the ceiling or high on the wall, at the top of open stairways, or at the bottom of enclosed stairs and near (but not in) the kitchen.
- Test and clean smoke alarms once a month and replace batteries at least once a year. Replace smoke alarms once every 10 years.





Willacy County
4-H



Willacy County
Visit our website at
Willacy.agrilife.org



Texas A&M AgriLife Extension
Willacy County
471 W. Hidalgo Ave
Raymondville, TX 78580

