

The 4-H Times

Willacy County

September 2019

Volume 10, Issue 1

TEXAS A&M
AGRI LIFE
EXTENSION

INSTRUCTIONS



Enrollment Procedures for 2019-2020

1. Access the 4-H CONNECT on-line system at: <https://texas.4honline.com/>
2. **New Members:** Select [I need to set up a profile].
Returning Members: Select [I have a profile] or [I forgot my password].
Contact County Extension Office for resetting assistance.
3. **New Members:** Select Adult or Youth from the drop down menu and click [Add Member].
Returning Members: Click [Edit] to the right of the inactive member's profile.
4. Once all profile information is current and correct under the Personal Information, Additional Information, Health Form, and Participation areas of enrollment continue to the Invoice page.
5. Review your invoice to ensure that the participation fee has been charged and it is correct. If you have been awarded an award certificate or a scholarship to cover your participation fee, enter the award code in the award code box. Once information has been reviewed, click continue to the Payment screen.
6. **New Members:** If you are new to 4-H, you can add your credit card payment information to 4-H CONNECT and it will be securely stored. Click the orange [Add New Credit Card] link if paying with credit card or select the county club check option.
Returning Members: If the credit card on file has been updated you will need to remove it and add the credit card again using the new information.
7. Select the appropriate method of payment by clicking on the correct button, then click [Select Payment Method.]
8. On the "Confirm page" each person will be required to click the [Pay By Computer Terms and Conditions]. Click [Submit Enrollment]
9. Once an enrollment (new member) or re-enrollment (returning member) has been submitted, it is sent to the county office for review and approval. Once approved and paid for, an email confirmation will be sent to the family email address. Payment by 4-H Check can take up to 2 weeks to process. An active membership status **WILL NOT** be granted until participation fees have been received and marked as paid.

4HConnect Instruction pages can be found online at <http://texas4-h.tamu.edu/connect>

NEW MEMBERS

- Set up **only one (1) FAMILY profile household** on 4-H CONNECT.
- Write down and place in a secure location the email address and password for the account. Contact the local County Extension Office for assistance in resetting the account.
- Add individual youth and adult profiles (members) in your family profile. Adult/Youth and family profiles must be entered for an enrollment to be reviewed and accepted.

RETURNING MEMBERS

- **DO NOT** establish another family or member profile on 4-H CONNECT if you already have one in the system.
- Contact the local County Extension Office for assistance with the email or password if forgotten. When you access your profile to re-enroll **REVIEW YOUR PROFILE VERY CAREFULLY**. Incorrect information can create problems for you, your family, and the Extension Office when trying to communicate, accessing appropriate fees, acquiring school absences, etc.



Texas A&M AgriLIFE Extension Service Programs serve people of all ages regardless of socioeconomic level, race, color, sex, disability, or national origin. The Texas A&M University System, U.S. Department of Agriculture, and the County Commissioners Courts of Texas cooperating.

Registered Heifer Tag Validations

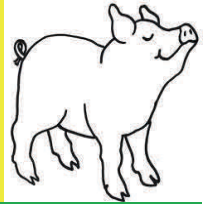
Deadline to order your Heifer Validation UIN is September 12th by 5:00 PM. Each UIN is \$20 if you have any questions call the extension office 689-2412.

4-H Meeting

The next 4-H Club & Council Meeting will be September 4th at 5:30 pm at the Raymondville Early College High School Library (2nd floor).

Hog Tag Orders

Deadline for hog validation tag orders is September 24, 2019 by 5 PM. Each tag is \$20 call the extension office (956-689-2412) if you have any questions. Money needs to be turned in before tags are ordered.



4-H Achievement Night

Please Join Us September 18th for our Annual Willacy County 4-H Awards Ceremony the location is pending approval and will be announced at a later date!

Lamb, Goat & Registered Heifer Validations

Lamb, Goat & Registered Heifers validation dates will be October 23rd & 24th at the Lyford Ag farm from 4-6 PM. Please do not get your animals down until all Ag teachers and County Agents are present. **All exhibitors and parents must be present at the time of validations to sign all paper work.**

RGVLS Commercial Heifer

RGVLS Commercial Heifer validations will be October 26, 2019 at the RGVLS show grounds between 9AM-1PM. Exhibitors must be present at the time of validations.

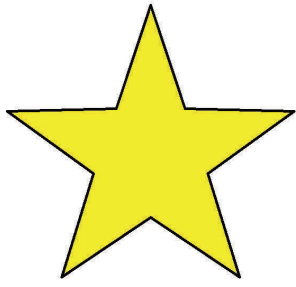
One day 4-H will take place on October 12, 2019 more information will be available at a later date!



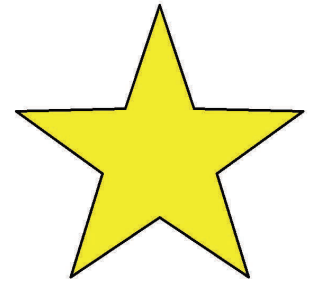
September



Sunday	Monday	Tuesday	Wednesday	Thursday	Friday	Saturday
1	2 Happy Labor Day	3	4 4-h Club meeting @5:30 at Raymondville High School Early College Library (2nd floor)	5	6	7
8	9	10	11	12 Deadline to order your Heifer Validation UIN before 3:00 PM	13	14
15	16	17	18	19	20	21
22	23	24 Deadline to order Validation Tags for Hogs before 3:00PM	25	26	27	28
29	30					

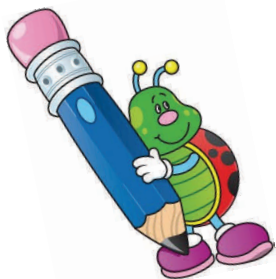


Back to School



C S C D T N E D U T S R D Y K I F K
 J P R T L M C W J B N W M O G Y M J
 T A A E E A M Y Z G Q U I Z Z E S C
 O N Y W C B S E S S A L C S B L R L
 M I O B R N A Z X G A B L O O H C S
 E S N L E I E H I F L M T U D Z O C
 J H S A B O T I P R A M M A R G R E
 V U A C R X V I C L K J E W S E N S
 M F F K E T S S N S A X F P P G C T
 R N W B H Y W A L G E B R A L F Q I
 E O C O C C H B Z X X Y P I Y S Y H
 A T P A A L W P A Y S C S R R M Q G
 D E K R E I E M A H J H B O O H T W
 I B L D T C S B H R E Y S Y T T S R
 N O A D O N F I T W G S J A S V U L
 G O H C N E R F A T I O S G I M W T
 L K C V E P U M M C P N E U H A K V
 F W S B A T G S S U H J M G D M Z M
 U R E R A S E R L Q J D F Y S T A K

- ALGEBRA
- ALPHABET
- ART
- BLACKBOARD
- CHALK
- CLASSES
- CRAYONS
- ENGLISH
- ERASER
- EXAMS
- FRENCH
- GEOGRAPHY
- GRAMMAR
- GYM
- HISTORY
- MATH
- NOTEBOOK
- PAPER
- PENCIL
- QUIZZES
- READING
- SCHOOLBAG
- SCIENCE
- SCISSORS
- STUDENT
- SPANISH
- TEACHER
- TUTOR
- WRITING





Patriotism Through Preparedness



Patriotism Through Preparedness is a program developed for youths.

Disasters can cause children to experience many different feelings, especially fear and sadness. Allowing children to actively participate in a family disaster plan is an excellent way to build their confidence and may help them cope better with their feelings in the event of a disaster.

As you may all know it is currently HURRICANE SEASON! Here are some helpful tips for getting ready even for the unexpected storms...



A hurricane is a type of tropical cyclone, the generic term for a low pressure system that generally forms in the tropics. A typical cyclone is accompanied by thunderstorms, and in the Northern Hemisphere, a counterclockwise circulation of winds near the earth's surface. A Hurricane is an intense tropical weather system of strong thunderstorms with a well defined surface circulation and maximum sustained winds of 74 MPH (64 knots) or higher.

To prepare for a hurricane you should take the following measures:

- **Make plans to secure your property. Permanent storm shutters offer the best protection for windows. A second option is to board up windows with 5/8" marine plywood, cut to fit and ready to install. Tape does not prevent windows from breaking.**
- **Install straps or additional clips to securely fasten your roof to the frame structure.**
- **This will reduce roof damage.**
- **Be sure trees and shrubs around your home are well trimmed.**
- **Clear loose and clogged rain gutters and downspouts.**
- **Determine how and where to secure your boat.**
- **Consider building a safe room.**

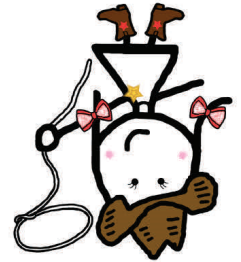
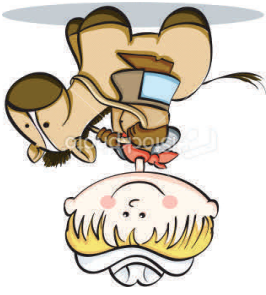


CLUB ED-Online Resource for Club Managers

CLUB ED was developed as a resource for club officers and club managers to gather ideas, management information, ceremonies, inspirations, program ideas, and other great club resources.

CLUB ED is organized month by month in order to make it easier for information gathering. In each month you will find the following pieces of information : Club Activities, Club Managers Checklist, Community Service Activities, Flag Ceremonies, Ice Breakers, Parent Opportunities, Program Ideas & Officer Installment Ceremonies.





• Texas A & M AgriLife Extension
• Willacy County
• 471 W. HIDALGO AVE
• Raymondville, TX 78580

