



TEXAS A&M AGRI LIFE EXTENSION

The 4-H Times

Willacy County

October 2019

Volume 10 Issue 2

Halloween Safety Tips



Extension Office will be closed October 14th in observance of Columbus Day the office will reopen October 15th at regular working hours!

Halloween is a cherished tradition but the excitement of the night can cause children to forget to be careful. There is no real "trick" to making Halloween a real treat for the entire family. The major dangers are not from witches or spirits but rather from falls and pedestrian/car crashes. The following are helpful tips to keeping you safe while you are trick or treating.

- *Never, ever go trick-or treating alone.*
- *Plan and review your trick-or-treating route with your parents before you begin. Do not stray from your planned route.*
- *Be very cautious of any strangers at houses or on the street.*
- *Never go inside a house -- accept treats only at the door.*
- *Don't eat any candy until you get home, and be sure your parents check your candy before you eat it.*
- *Everybody should wear a highly-visible or reflective costume and carry a flashlight when trick-or-treating at night.*
- *Stay on sidewalks and walkways.*
- *Walk! Do not run in your costume because you might trip and injure yourself.*
- *Carry a cell phone in case of an emergency.*
- *Always be sure to eat a good meal before going trick-or-treating.*



RGV Commercial Heifer Validation will be held October 26th at the Rio Grande Valley Livestock Show Grounds more details will be available when we receive them and will be posted on our website

Willacy.agrilife.org

4-H meeting will take place October 1st at 6:30 PM at the Willacy County Livestock Show Grounds.

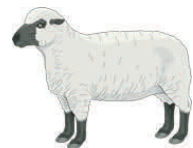
Goat & Lamb Validations



Date: October 23-24, 2019

Time: 4:00-6:00 p.m.

Location: Lyford Ag Farm



Hog Validations will take place in November anyone who bought tags will be contacted to schedule a date to do validations.

Heifer Validations

Anyone who purchased validation tag for Spring registered heifers will be contacted soon to set up a date to meet for validations. We will be needing registration paper work for each heifer by October 21st. If you have any questions contact the office 689-2412.

4-H Enrollment Fees

4-H Registration Deadline is November 1st and a fee of \$25 will need to be paid. If you register after November 1st the fee will be \$30. **YOU MUST BE REGISTERED BY NOVEMBER 1ST IF YOU WILL BE PARTICIPATING IN ANY LIVESTOCK SHOWS!!** The website to register is <http://texas4-h.tamu.edu/4hconnect/index.html>.

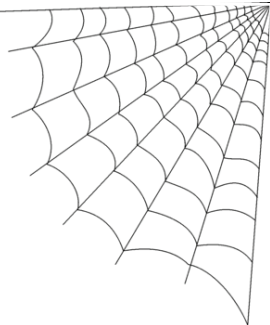
If you are interested in showing at any major shows in Texas please contact the Extension office to pick up applications! Deadline is Nov. 13th!

The new course for Quality Counts is now up and running on their website. Every 4-H & FFA member must complete the course in order to show at any 2020 Livestock shows.

<https://www.texaslivestockvalidation.com/qc/qcregister.aspx>



October



Sunday	Monday	Tuesday	Wednesday	Thursday	Friday	Saturday
		1 Willacy Co. 4-H Meeting 6:30 At Willacy County Live-stock Show Grounds	2	3	4	5
6	7	8	9	10	11	12
National 4-H Week						
	 <div style="background-color: #ff0000; color: white; padding: 2px; text-align: center;">OFFICE CLOSED</div>					
13	14	15	16	17	18	19
20	21	22	23 Goat & Lamb Validations 4-6 p.m. @ Lyford Ag Farm.	24 Goat & Lamb Validations 4-6 p.m. @ Lyford Ag Farm	25	26
27	28	29	30	31 		

Patriotism Through Preparedness

Floods

Floods are one of the most common hazards in the United States. Some floods develop slowly, sometimes over a period of day. But flash floods can develop quickly, sometimes in just a few minutes and without any visible signs of rain. Overland flooding occurs outside a defined river or stream, such as when a levee is breached, but still can be destructive. Be aware of flood hazards no matter where you live, but especially if you live in a low-lying area. If you leave your home during a flood do not walk through moving water six inches of moving water can make u fall. If you have to walk in the

water, walk where the water is not moving.

Driving Flood Facts:

The following are important points to remember when driving in flood conditions:

- *Six inches of water will reach the bottom of most passenger cars causing loss of control and possible stalling.*
- *A foot of water will float many vehicles.*
- *Two feet of rushing water can carry away most vehicles including sport utility vehicles and pick ups.*



Online Resource for 4-H Club Managers

CLUB ED was developed as a resource for club officers and club managers to gather ideas, management information, ceremonies, inspirations, program ideas, and other great club resources.

CLUB ED is organized month by month in order to make it easier for information gathering. In each month you will find the following pieces of infor-

mation: Club Activities, Club Managers Checklist, Community Service Activities, Flag Ceremonies, Ice Breakers, Inspirations, Parent Opportunities and Program Ideas. CLUB ED is located at <http://texas4-h.tamu.edu/clubed/>



Halloween Word Search

s m o a t o n e e w o l l a h r s
c t r i c k o r t t r e a t s t r p
h a u n t e d h o u s e p k c e o
r a n k s r s k t e o i d e o t o
t r e d l i t t e p d w b l i s k
c t d r y p s s a e a m i e a n y
k c i t s m o o r b t b l t k o c
a r k k e a h s e m u t s o c m n
h o o k k v g p u m p k i n o h m

BATS
BROOMSTICK
CANDY
COSTUMES
GHOSTS
HALLOWEEN
HAUNTED HOUSE
MONSTER
PUMPKIN
SKELETON
SPIDERS
SPOOKY
TRICK OR TREAT
VAMPIRE





Texas A&M AgriLife Extension
Willacy County
471 W. HIDALGO AVE
Raymondville, TX 78580

